


# Regional Networks and the International Dimension

Prof. Dr. Uwe Schneidewind, University of Oldenburg, D  
Mag. Clemens Mader, University of Graz, AUT  
Dr. Maik Adomßent, University of Lüneburg, D



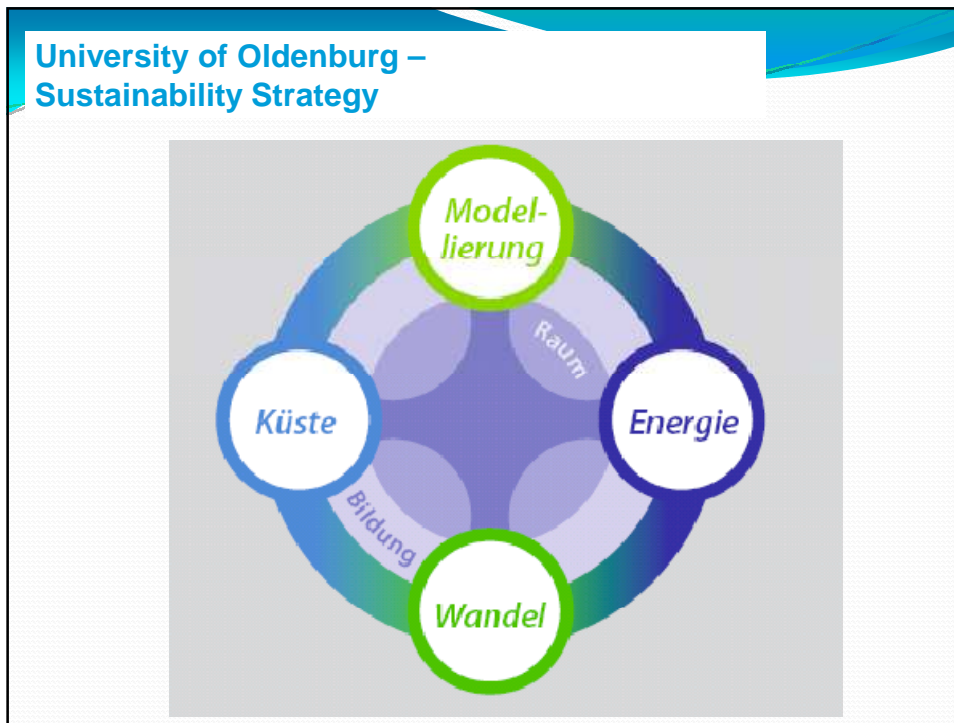
2nd ISCN – Conference Zurich April, 2008

## University of Oldenburg – Part of the German North West University Landscape



Logos and names of institutions shown on the map include:

- Universität Groningen
- Fachhochschule Osnabrück
- DEWI
- AWI
- Carl von Ossietzky Universität Oldenburg
- Jacobs University
- Universität Bremen
- Hochschule Bremerhaven
- Institut Fertigungstechnik Materialforschung
- ART MUSIC
- HOCHSCHULE BREMEN
- Wissenschaftskolleg
- DLR
- DFK
- Hanse
- OFFIS
- Bundesinstitut für Kultur und Geschichte der Deutschen im östlichen Europa
- Hochschule Vöhrden



## The Regional Centres of Expertise on Education for Sustainable Development (RCE)

- Initiative in the framework of the UNDESD
- Global coordination by the RCE Service Centre based at United Nations University – Institute of Advanced Studies in Yokohama, Japan



REGIONAL CENTRE OF EXPERTISE  
ON EDUCATION FOR  
SUSTAINABLE DEVELOPMENT

ACKNOWLEDGED BY



UNITED NATIONS  
UNIVERSITY

Regional Networks and the International Dimension, Schneidewind, Mader, 2<sup>nd</sup> ISCN Conference 2008

## RCE Overall Goals

***An RCE is a network of regional institutions mobilised to deliver education for sustainable development (ESD) to local and regional communities.***

***RCEs aspire to achieve the goals of the UN Decade of Education for Sustainable Development (DESD, 2005-2014), by translating its global objectives into the context of the local communities in which they operate.***

***A network of RCEs worldwide constitutes the Global Learning Space for Sustainable Development.***

***Research and Higher Education for SD are central aims of RCEs***

Regional Networks and the International Dimension, Schneidewind, Mader, 2<sup>nd</sup> ISCN Conference 2008

## The Global Learning Space for SD

<p><b><i>In South America and the Caribbean</i></b></p> <ol style="list-style-type: none"> <li>1. Curitiba-Parana, Brazil</li> </ol> <p><b><i>In North and Central America</i></b></p> <ol style="list-style-type: none"> <li>1. Grand Rapids, USA</li> <li>2. Greater North Central Texas, USA</li> <li>3. Greater Sudbury, Canada</li> <li>4. Montreal, Canada</li> <li>5. Saskatchewan, Canada</li> <li>6. Toronto, Canada</li> <li>7. Western Jalisco, Mexico</li> </ol> <p><b><i>In Africa</i></b></p> <ol style="list-style-type: none"> <li>1. Ghana</li> <li>2. Greater Mbarara, Uganda</li> <li>3. Greater Nairobi, Kenya</li> <li>4. Kano, Nigeria</li> <li>5. KwaZulu Natal, South Africa</li> <li>6. Lagos, Nigeria</li> <li>7. Makana and Rural Eastern Cape, South Africa</li> <li>8. Maputo, Mozambique</li> <li>9. Swaziland</li> <li>10. Zomba, Malawi</li> </ol>	<p><b><i>In the Asia-Pacific region</i></b></p> <ol style="list-style-type: none"> <li>1. Anji, China</li> <li>2. Beijing, China</li> <li>3. Bogor, Indonesia</li> <li>4. Cebu, Philippines</li> <li>5. Cha-am, Thailand</li> <li>6. Chubu, Japan</li> <li>7. Greater Sendai, Japan</li> <li>8. Guwahati, India</li> <li>9. Hyogo-Kobe, Japan</li> <li>10. Incheon, Korea</li> <li>11. Kitakyushu, Japan</li> <li>12. Kodagu, India</li> <li>13. Kyrgyzstan</li> <li>14. Lucknow, India</li> <li>15. Okayama, Japan</li> <li>16. Pacific Island Countries</li> <li>17. Penang, Malaysia</li> <li>18. Pune, India</li> <li>19. Tongyeong, Korea</li> <li>20. Trang, Thailand</li> <li>21. Yogyakarta, Indonesia</li> <li>22. Yokohama, Japan</li> </ol>	<p><b><i>In Europe and the Middle East</i></b></p> <ol style="list-style-type: none"> <li>1. Barcelona, E</li> <li>2. Creias-Oeste, P</li> <li>3. East Midlands, UK</li> <li>4. Graz-Styria, AUT</li> <li>5. Hamburg, D</li> <li>6. Ireland</li> <li>7. Jordan</li> <li>8. Munich, D</li> <li>9. North East, UK</li> <li>10. Nuremberg, D</li> <li>11. Rhine-Meuse region, NL/D/B</li> <li>12. Samara, Russia</li> <li>13. Skane, Sweden</li> <li>14. Southern North Sea, B/NL/F</li> <li>15. West Midlands, UK</li> </ol> <p>55 RCEs by April 2008</p> <p style="text-align: center;"><a href="#">Link to RCE Website</a></p>
--	--	--

Regional Networks and the International Dimension, Schneidewind, Mader, 2<sup>nd</sup> ISCN Conference 2008

## The COPERNICUS Alliance – Short History

- COPERNICUS (CO-operation Programme in Europe for Research on Nature and Industry through Coordinated University Studies)
- 1993: The CRE- COPERNICUS Charta
- 2006: 326 signatories, impact on Bologna Reform;

Regional Networks and the International Dimension, Schneidewind, Mader, 2<sup>nd</sup> ISCN Conference 2008

## The COPERNICUS Alliance - European Network on Higher Education for Sustainable Development

### Aims:

- NETWORK: to exchange and enhance knowledge on Education for Sustainable Development between European higher education and student organisations that work for sustainable development.
- POLICY: to promote Higher Education for Sustainable Development in European Policy
- SERVICE: to disseminate tools for sustainability integration in Higher Education
- OUTREACH: to promote sustainable development in European Higher Education
- REPRESENTATION: to represent European HESD in international committees on ESD

Regional Networks and the International Dimension, Schneidewind, Mader, 2<sup>nd</sup> ISCN Conference 2008

## The COPERNICUS Alliance - European Network on Higher Education for Sustainable Development

### • VISION

- The vision of the COPERNICUS Alliance is to promote sustainability integration into European Higher Education to improve education and research for sustainable development in partnership with the society

### • Management

- The president is being elected every second year by the representatives of the full member institutions being present at the Annual Conference

Regional Networks and the International Dimension, Schneidewind, Mader, 2<sup>nd</sup> ISCN Conference 2008

## The COPERNICUS Alliance - European Network on Higher Education for Sustainable Development

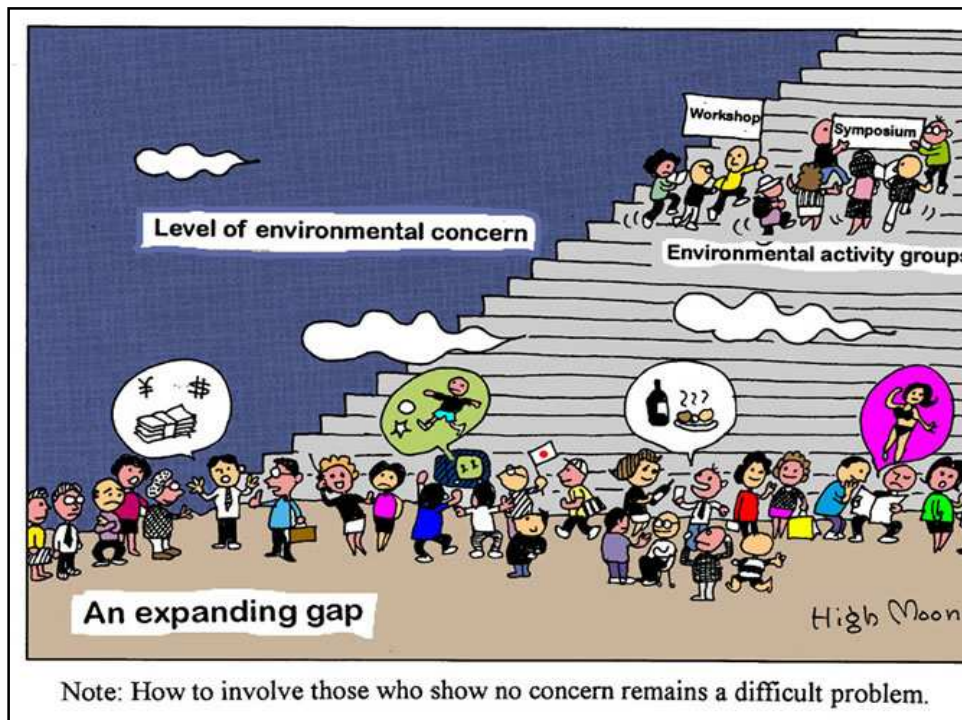
- Board:
  - Prof. Dr. Hans van Ginkel, former president of UNU, (RCE Network - GLS)
  - Prof. Dr. Gerd Michelsen, UNESCO Chair HESD, Leuphana University of Lüneburg, D
  - Prof. Dr. Uwe Schneidewind, University of Oldenburg, D
  - Prof. Dr. Rietje van Dam-Mieras, Leiden University, NL
  - Prof. Friedrich M. Zimmermann, University of Graz, AUT
- Management
  - Dr. Maik Adomßent, Leuphana University Lüneburg, D
  - Mag. Clemens Mader, University of Graz, AUT

Regional Networks and the International Dimension, Schneidewind, Mader, 2<sup>nd</sup> ISCN Conference 2008

## The COPERNICUS Alliance - European Network on Higher Education for Sustainable Development

- Timeplan
  - January 2008: Consultation Meeting, Prague, CZ
  - April 2008: 1st Public Announcement, ISCN, Zurich, CH
  - April 2009: Public Presentation, UNDESD Halftime Conference, Bonn, D
  - Autumn 2009: Launch Conference

Regional Networks and the International Dimension, Schneidewind, Mader, 2<sup>nd</sup> ISCN Conference 2008



Uwe Schneidewind, Maik Adomßent & Clemens Mader

... thank you for your attention!!!

For more information and feedback, please contact:  
Clemens Mader, University of Graz, RCE Graz-Styria at:  
clemens.mader@uni-graz.at

Regional Networks and the International Dimension, Schneidewind, Mader, 2<sup>nd</sup> ISCN Conference 2008