



**Sustainable communication, travel
and transportation
- examples from Göteborg university**

**Eddi Omrcen
Environmental Manager**

**Sustainable Campus Conference
Zurich 25-27 April 2007**

Information on www.gu.se/miljo
Sustainability report 2006



Göteborg University

Eight faculties – 57 departments

The Sahlgrenska Academy - Medicine,
Odontology, Health and Caring Sciences

The Faculty of Natural Science

The Faculty of Humanities

The Faculty of Fine and Applied Arts

The Faculty of Social Sciences

The School of Business, Economics and Law

The Faculty of Education

The IT University

The Education and Research Board for Teacher
Training is in charge of all the teacher education
and training carried out in the co-operating
faculties.



Employees 2006

5,180 employees which is the
equivalent of
4,622 full-time employees
distributed as:

2,446
teachers/researchers/postgraduate
students,
450 professors and
1,726 technical/administrative staff



**Undergraduate students and
research students 2006**

50,300 students
25,621 full-time students
5,869 completed degrees

2,584 active research students
359 recently recruited research students
290 Ph.Ds
61 licentiate degrees



Facts - Financial Year 2006

Incomes
4,392 million SEK total income
2,998 million SEK state grants
1,394 million SEK external fundings and
other revenues

Expenses
4,313 million SEK
2,487 million SEK costs for staff
582 million SEK for premises



GÖTEBORG UNIVERSITY

Strategic profile

Midtown - Midstream

Open minds, open doors

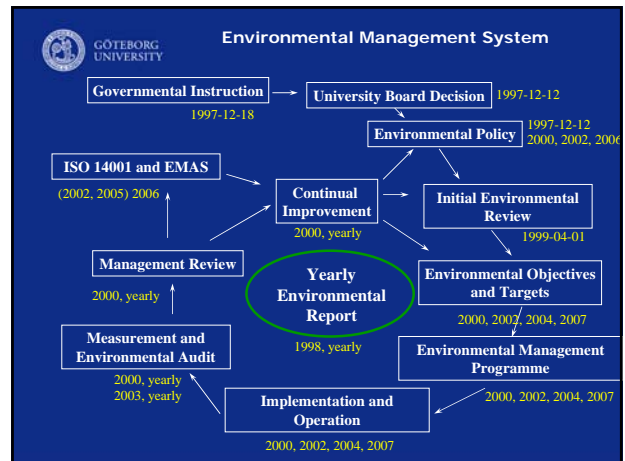
Where research and education meet



Many disciplines in creative interaction

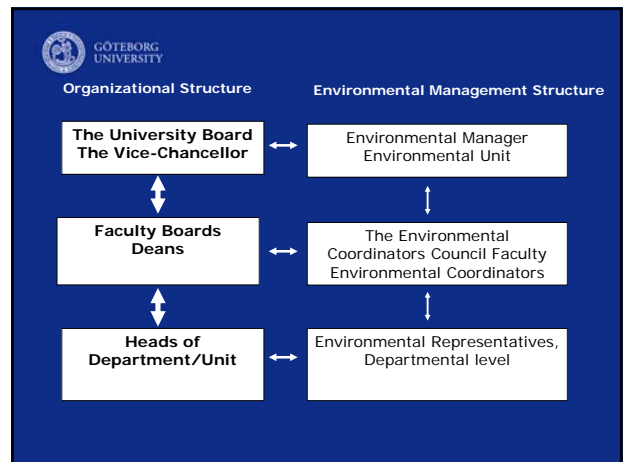
Committed to a sustainable society

A major European University



GÖTEBORG UNIVERSITY

ISO14001 and EMAS – the diploma

GÖTEBORG UNIVERSITY

Objective for travel and transport 2004-2006

- Reduce environmental impact of travel and transport
- Results:
 - the relation of train travel is increasing,
 - personal car use is decreasing,
 - computer and videoconferences are increasing,
 - domestic air travel is decreasing)
- Travel in total is decreasing!?
- Computer and video conferences
- Bicycle challenge
- Education and information
- Investigating travel habits
- Results in Sustainability report

GÖTEBORG UNIVERSITY

How does GU staff travel to work?

- 30 % by public transportations
- 20 % by bicycle
- 20 % walking
- 30 % by car (14-23% travel alone)
- One third of the car travellers say they can consider changing to public transport if it functions well. Great challenge!



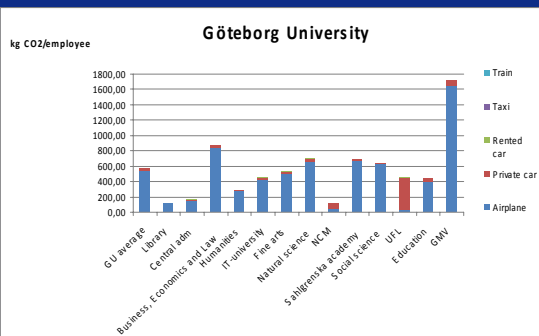
Plans for the future

New Objective (2007-2010):
Reduce greenhouse gases with 4%

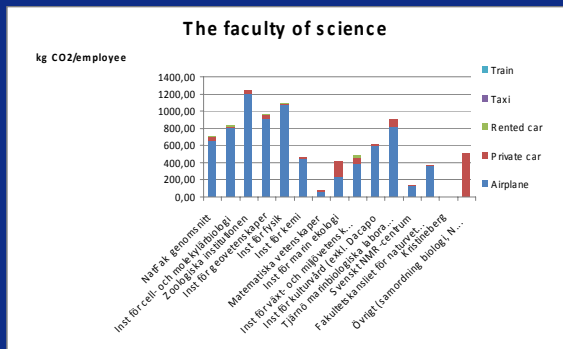
- Car pooling
- Bicycles at work
- More public transportations
- Inventory on transportations, logistics, central distribution
- Overwiv of rules and regulations
- Campaigns and competition
- Cooperation with local authorities
- Use researchers and research results inhouse to improve operations
- Climate board
- CO2 emissions on department level



Travel and CO2 emissions



Travel and CO2 emissions on a faculty



THANK YOU!

