

novatlantis
Sustainability at the ETH domain

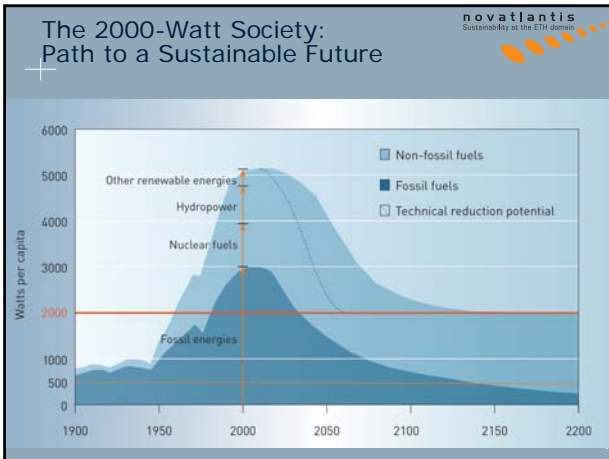
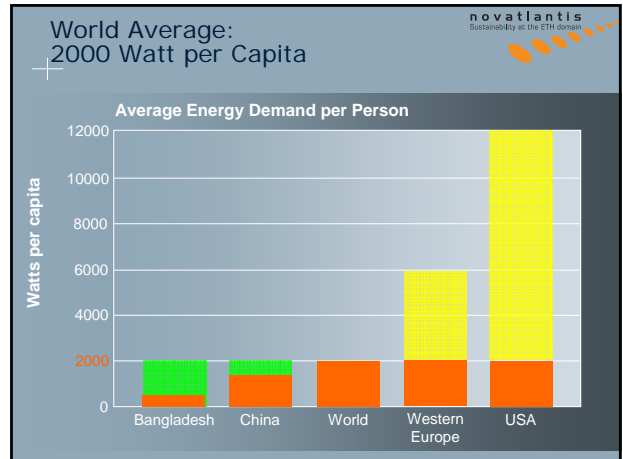
Sustainable Campus Network Best Practice - Future Challenges



Roland Stulz, Novatlantis

ETH BSRM ETH Universität Zürich PHILIPS

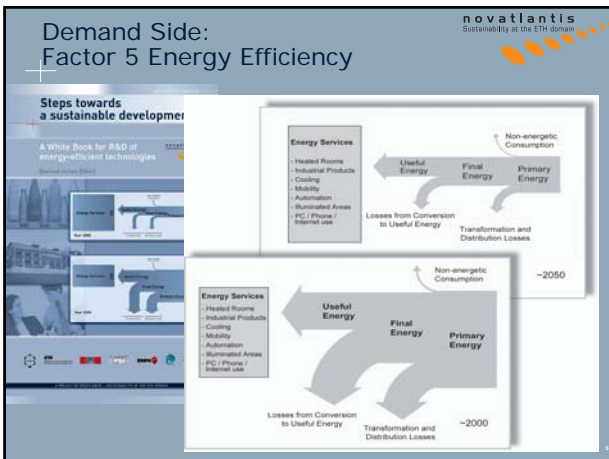
ST-MARU/21174/Sustainable_Campus/Conference_2007/Presentations/ST_SustCampus_v2



novatlantis
Sustainability at the ETH domain

2000-Watt Society means ...

Category	2005	2050
SUV (Fossil Fuel)	10 litres/100km	Light Cars 3 litres/100km (Natural Gas, H ₂)
Building Portfolio	10 litres oil/m ²	Minergie-P Buildings 3 litres oil/m ²
Fossil Energy (oil, gas, coal)		Renewable Energy sun fuels
"Waste Society" person	350 kg/year*person	Closed Material Cycles 150 kg/year*person



novatlantis
Sustainability at the ETH domain

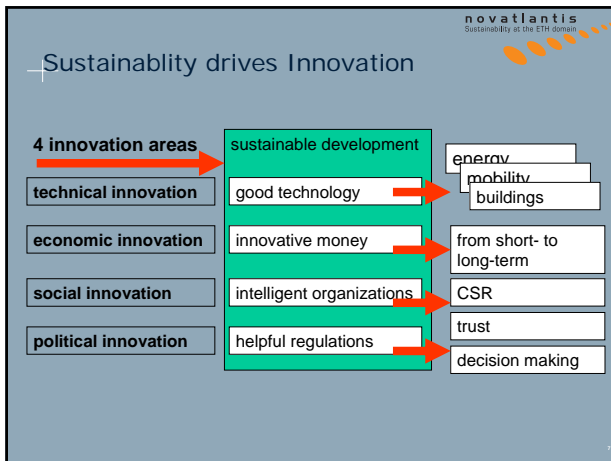
Novatlantis: Private Public Partnership for Sustainability and Innovation

2000 Watt Leadership Partner Cities :

- ▶ Basel
- ▶ Zurich
- ▶ Geneva

Landmarks for a Sustainable Future





- Goals of the Conference**
- > Show good examples of sustainable campus design
 - > Find out the main issues
 - > Clarify the most urgent requirements
 - > Define tools, which can satisfy these requirements
 - > Give a first-hand impression of how pioneers can benefit from other experiences and how their experience can become most valuable for others

- Goals of the Network**
-
- The diagram features a central graphic of three blue arrows forming a circular loop. The words 'Landmarks', 'Conference', and 'Knowledge Management' are positioned around this graphic. To the right of the graphic is a list of three goals for the network.
- > Enable a global dialogue between pioneers of campus sustainability
 - > Initiate a global experience exchange on sustainable campus initiatives
 - > Develop a knowledge management system that leverages the experiences gained by the network partners